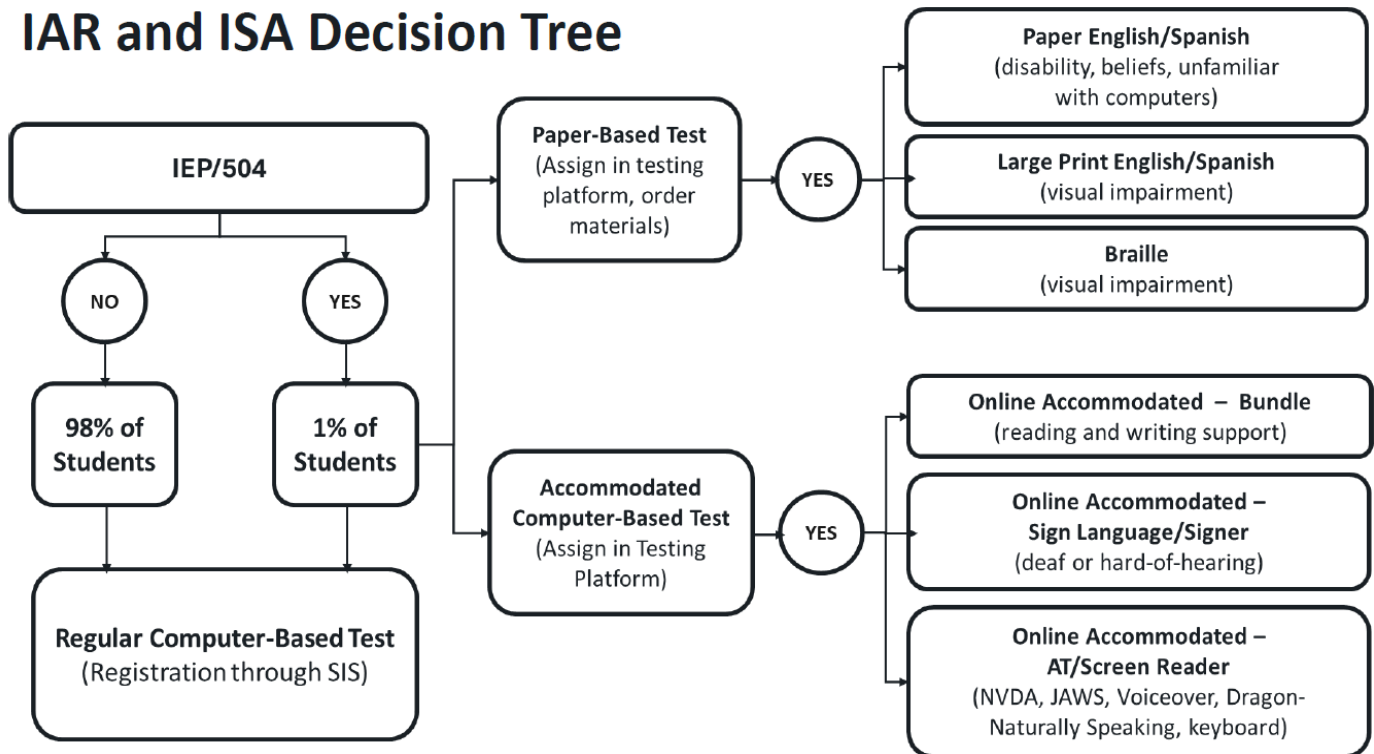


Section 5: Decision Trees

The following charts and explainers are provided to help Test Coordinators, Principals, IEP and 504 Teams, and EL educators determine which Grades 3-8 accommodated Illinois Assessment of Readiness and accommodated Grades 5&8 Illinois Science Assessment tests to assign students in the Illinois Administration Platform.

5.1 IAR and ISA Decision Tree

IAR and ISA Decision Tree



This chart provides a basic decision tree for assigning IAR and ISA tests. Students who do not have an IEP or 504 will be registered for grade-specific IAR and ISA assessments through the SIS system. For students with an IEP or 504, the diagram visualizes the decision tree for assigning these students appropriate IAR and ISA test assignments.

DECISION 1: At the top left of the graphic, the tree splits into two paths based on whether the student has an IEP or 504.

NO: Students who do **NOT** have an IEP or 504 are automatically registered for grade-level IAR and ISA standard computer-based assessments through SIS.

YES: Students with an IEP or 504 are automatically registered for grade-level IAR and ISA standard computer-based assessments through SIS. During registration, the Test Coordinator and IEP/504 teams should review each student's testing plan to identify if the student needs additional supports beyond the universal tools, accessibility features and administrative considerations available on the standard computer-based test.

- ❖ Refer to **Section 2: Overview of the Standard Computer-Based Assessment: Universal Tools, Accessibility Features, and Administrative Considerations for Computer-Based Testing.**

DECISION 2: Does the student with an IEP or 504 need additional support beyond standard computer-based universal tools, accessibility features, and administrative considerations that ISBE already provides for all students? This decision should be subject-specific, as tools and accessibility features vary between IAR and ISA assessments.

NO: If no additional supports are needed, the student will remain automatically registered for grade-level IAR and ISA standard computer-based assessments.

YES: The Test Coordinator and IEP/504 teams should review the IAR and ISA accommodations against the student's testing plan to identify the most appropriate accommodated testing assignment for the student.

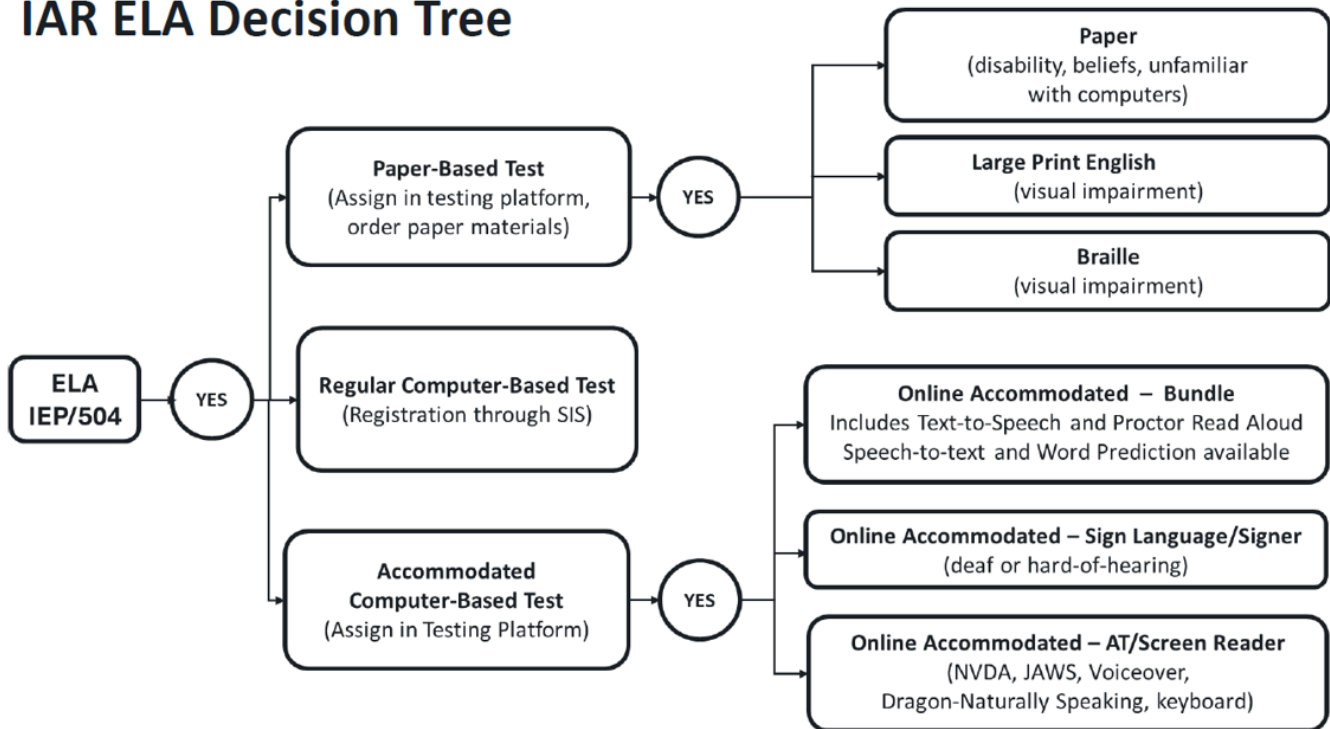
DECISION 3: Does the student's testing plan require paper-based testing?

YES: Students who require paper-based testing will have five paper-based testing options: the paper test in English, the paper test in Spanish for mathematics and science, the large print test, the large print test in Spanish for mathematics and science, and the braille test. The Test Coordinator and student's IEP/504 teams should review the IAR and ISA paper-based accommodations described in **Section 3: Accommodations for Students with Disabilities** and assign the most appropriate accommodated testing assignment and order the paper-based test in the Illinois Administration Platform.

NO: Students who require support outside the standard computer-based test will have three computer-based testing options: the **Online Accommodated - Bundle**, the **Online Accommodated - Sign Language**, or the **Online Accommodated - AT/Screen Reader** forms. The Test Coordinator and student's IEP/504 teams should review the following subject-specific decision trees and reference **Section 3: Accommodations for Students with Disabilities** to inform selecting appropriate testing assignments in the Illinois Administration Platform.

5.2 IAR ELA/L Decision Tree

IAR ELA Decision Tree



Repeat steps 1 through 3 from the [IAR and ISA Decision Tree](#). If the response to Decision 3 for ELA/L was "No," please proceed to the following instructions.

The Test Coordinator and student's IEP/504 teams should review the accommodated computer-based tests in **Section 3: Accommodations for Students with Disabilities** and choose the most appropriate accommodated testing assignment in the Illinois Administration Platform. The accommodated computer-based tests include an accommodated bundle, an accommodated sign language, and an accommodated AT/screen reader test form.

Online Accommodated – Bundle - ELA/L: This ELA/L test form provides **both** Text-to-Speech and Proctor Read Aloud (Human Reader) options, allowing schools to choose **either** support **or** a combination for each student on test day without changing assignments. The Test Coordinator and IEP/504 teams should decide which reading support(s) the student will use and clearly communicate this plan to the Test Proctor.

- **Tool Add-On – Speech to Text and Word Prediction:** Speech-to-Text and Word Prediction can be assigned as a tool add-on to the **Online Accommodated Bundle – ELA/L** in the Illinois Administration Platform for students whose IEP requires both reading and writing support on ELA/L state assessments and for whom the add-on is appropriate.

Online Accommodated - Sign Language: This ELA/L test form includes both item-level American Sign Language Videos and a Proctor Read Aloud (Human Signer) option that Test Proctors can access to sign the items for students. The Test Coordinator and IEP/504 teams should decide which signing support(s) the student will use and clearly communicate this plan to the Test Proctor.

- **Tool Add-On – Speech to Text and Word Prediction:** Speech-to-Text and Word Prediction can be assigned as a tool add-on in the Illinois Administration Platform for students whose IEP requires both reading and writing support on ELA/L state assessments and for whom the add-on is appropriate.

Online Accommodated - AT/Screen Reader: This test form is for blind or visually impaired students who regularly use a screen reader and refreshable braille device and can read braille and tactile graphics. This test form is compatible with various screen readers, Dragon NaturallySpeaking, and keyboard navigation. Students who are blind, visually impaired, or dependent on these technologies may be eligible. The **Assistive Technology Guidelines** available on the Illinois Support Site at <https://il.mypearsonsupport.com/> provide the TestNav allow list for technology compatible with TestNav. Click on **Resources > Spring 2026 Accessibility Features and Accommodations (AF&A) Resources**.

This test form can also be assigned to sighted students who use their own assistive technology for reading or writing support. However, the Test Coordinator and IEP/504 teams should review the **Online Accommodated – Bundle** test form when deciding if the **Online Accommodated – AT/Screen Reader** option is suitable. In certain cases, the **Online Accommodated – Bundle**, with or without the **Tool Add-On – Speech to Text and Word Prediction**, may actually be a better fit for some sighted students.

- **Tool Add-On – Speech to Text and Word Prediction:** This tool is unsuitable for this test form.

In cases where the student's AT is not compatible with TestNav, the **Online Accommodated – Bundle** may be appropriate for students who can successfully use Pearson's Text-to-Speech, Speech-to-Text, and Word Prediction on IAR ELA/L practice tests <https://il.mypearsonsupport.com/practice-items>.

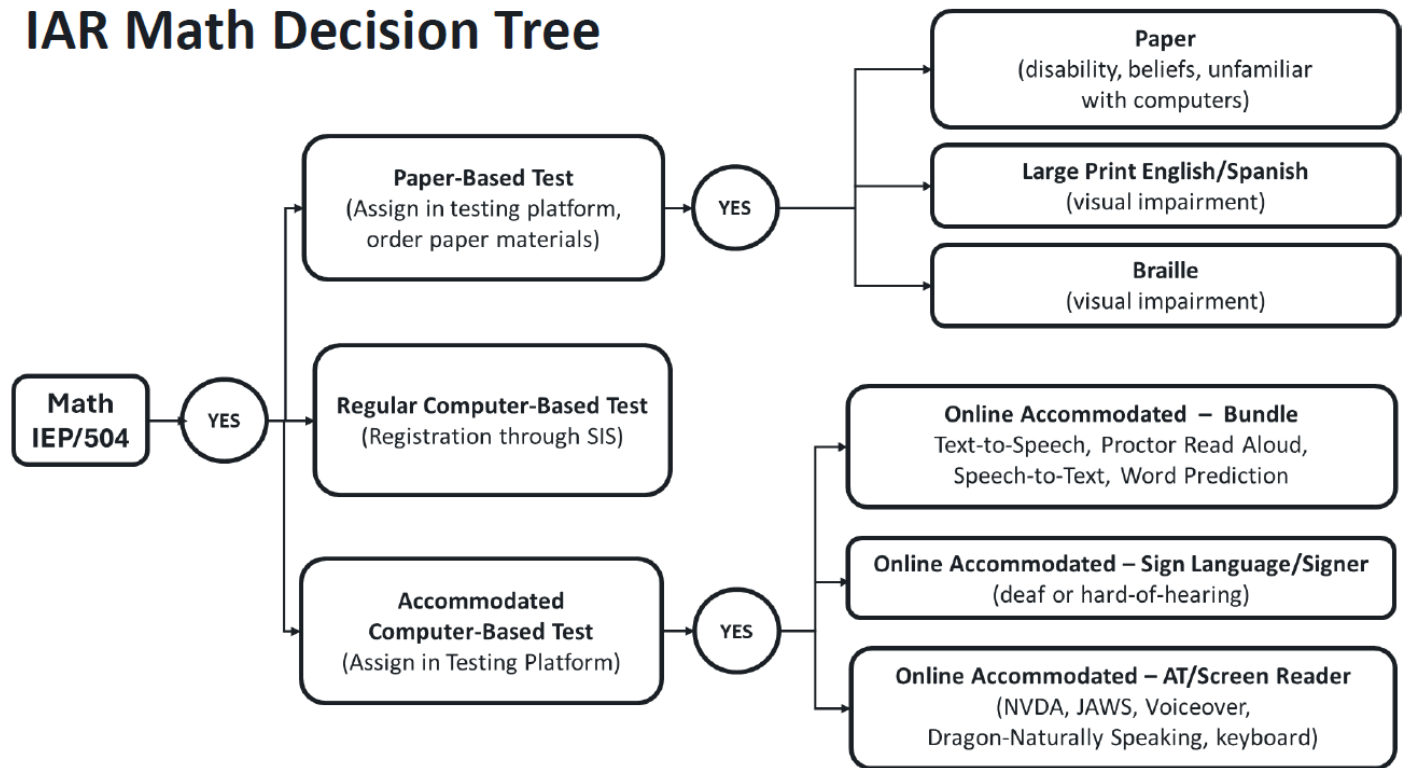
This test form is **NOT** appropriate for students who have deafness or hearing impairment with significant limitations or inability to decode text due to documented prolonged and early language deprivation, and who use **cochlear implants** or other hearing aids to access text-to-speech. These students should be assigned the **Online Accommodated -Bundle**.

Test Coordinators and IEP/504 teams should consult the following references to help determine whether this testing assignment is appropriate.

- ❖ **Section 3: Accommodations for Students with Disabilities**
- ❖ **Appendix C: Illinois Assessment of Readiness and Illinois Science Assessment for Students with Visual Impairment, Including Blindness**
- ❖ **Assistive Technology Guidelines** on the Illinois Support Site at <https://il.mypearsonsupport.com>. Go to **Resources>Spring 2026 Accessibility Features and Accommodations (AF&A) Resources**
- ❖ **Infrastructure Trial Readiness Guide** on the Illinois Support Site at <https://il.mypearsonsupport.com>. Go to **Technology Setup>User Guides**

5.3 IAR Mathematics Decision Tree

IAR Math Decision Tree



Repeat steps 1 through 3 from the [IAR and ISA Decision Tree](#). If the response to Decision 3 for mathematics was "No," please proceed to the following instructions.

The Test Coordinator and student's IEP/504 teams should review the accommodated computer-based tests in **Section 3: Accommodations for Students with Disabilities** and choose the most appropriate accommodated testing assignment in the Illinois Administration Platform. The accommodated computer-based tests include an accommodated bundle, an accommodated sign language, and an accommodated AT/screen reader test form.

Online Accommodated – Bundle – Mathematics: This version of the mathematics test offers **both** built-in reading and writing support. For reading support, students can use **either** the Text-to-Speech or Proctor Read Aloud (Human Reader) features, **or** a combination of both, as decided by the Test Coordinator and IEP/504 teams. It is important that the chosen reading supports are clearly communicated to the Test Proctor before test day. For writing support, the test form includes the **Tool Add-On - Speech-to-Text and Word Prediction**, providing writing assistance for students on constructed response items.

- **Tool Add-On – Speech to Text and Word Prediction:** This tool is included in this test form and does not need to be assigned separately.
- **Tool Add On – Online Calculator:** the grade-specific calculator in non-calculator sections can be assigned as a tool add-on to the **Online Accommodated Bundle – Mathematics** in the Illinois Administration Platform for students whose IEP requires a calculator in non-calculator sections on state assessments and for whom the add-on is appropriate.

Online Accommodated - Sign Language: This mathematics test form includes both item-level American Sign Language Videos and a Proctor Read Aloud (Human Signer) option that Test Proctors can access to assign the items for students. The Test Coordinator and IEP/504 teams should decide which reading support(s) the student will use and clearly communicate this plan to the Test Proctor.

- **Tool Add-On – Speech to Text and Word Prediction:** This tool is incompatible with this test form.
- **Tool Add On – Online Calculator:** the grade-specific calculator in non-calculator sections can be assigned as a tool add-on to the **Online Accommodated Bundle – Mathematics** in the Illinois Administration Platform for students whose IEP requires a calculator in non-calculator sections on state assessments and for whom the add-on is appropriate.

Online Accommodated - AT/Screen Reader: This test form is for blind or visually impaired students who regularly use a screen reader and refreshable braille device and can read braille and tactile graphics. This test form is compatible with various screen readers, Dragon NaturallySpeaking, and keyboard navigation. Students who are blind, visually impaired, or dependent on these technologies may be eligible. The **Assistive Technology Guidelines** available on the Illinois Support Site at <https://il.mypearsonsupport.com/> provide the TestNav allow list for technology compatible with TestNav. Click on **Resources > Spring 2026 Accessibility Features and Accommodations (AF&A) Resources**.

This test form can also be assigned to sighted students who use their own assistive technology for reading or writing support. However, the Test Coordinator and IEP/504 teams should review the **Online Accommodated – Bundle** test form when deciding if the **Online Accommodated – AT/Screen Reader** option is suitable. In certain cases, the **Online Accommodated – Bundle** may actually be a better fit for some sighted students.

- **Tool Add-On – Speech to Text and Word Prediction:** This tool is incompatible with this test form.
- **Tool Add-On – Online Calculator:** This tool is generally unsuitable for blind or visually impaired students who use local, specialized calculators for calculation. Sighted students using the **Online Accommodated – AT/Screen Reader** test form may be assigned the **Tool Add-On – Online Calculator** in non-calculator sections through the Illinois Administration Platform if their IEP requires one for state assessments and the add-on is suitable.

In cases where the student’s AT is not compatible with TestNav, the **Online Accommodated – Bundle** may be appropriate for students who can successfully use Pearson’s Text-to-Speech, Speech-to-Text, and Word Prediction on IAR ELA/L practice tests <https://il.mypearsonsupport.com/practice-items>.

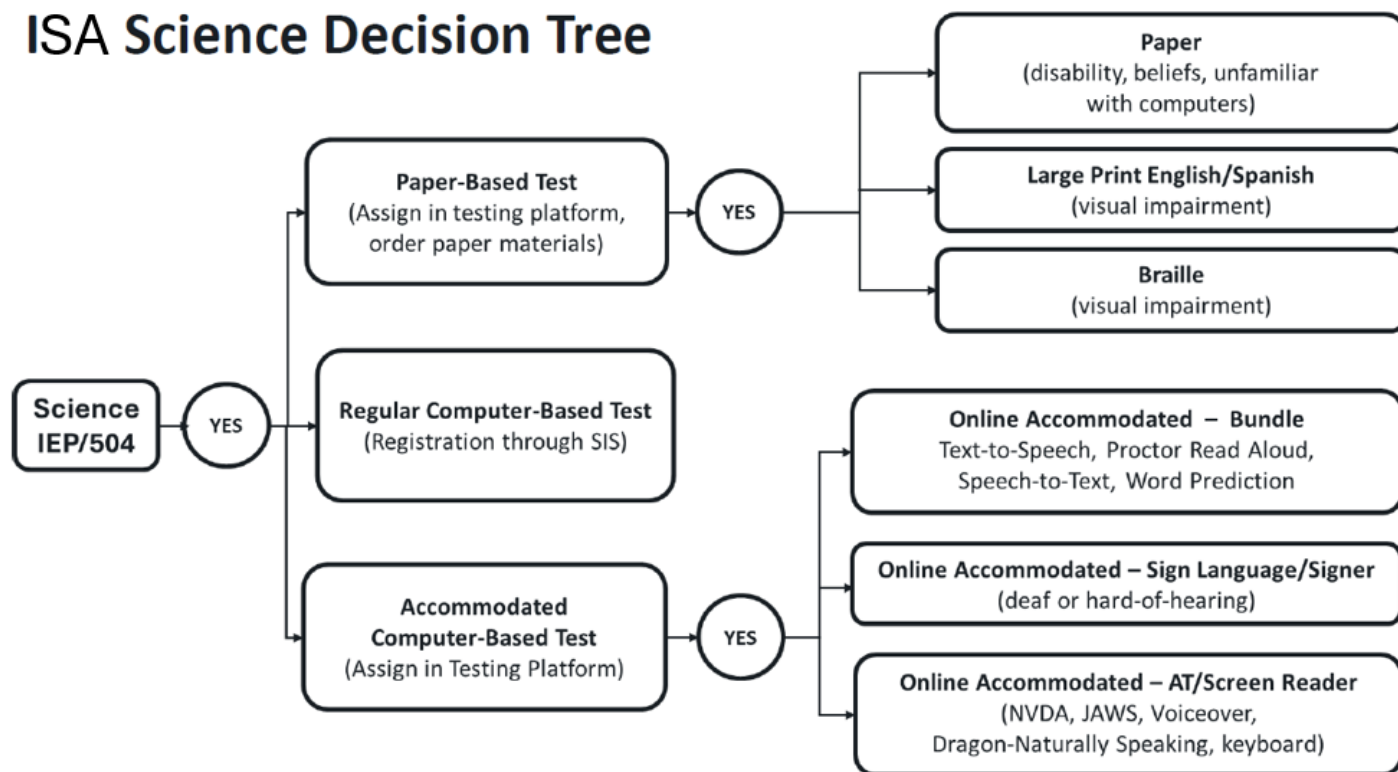
This test form is **NOT** appropriate for students who have deafness or hearing impairment with significant limitations or inability to decode text due to documented prolonged and early language deprivation, and who use **cochlear implants** or other hearing aids to access text-to-speech. These students should be assigned the **Online Accommodated -Bundle**.

Test Coordinators and IEP/504 teams should consult the following references to help determine whether this testing assignment is appropriate.

- ❖ **Section 3: Accommodations for Students with Disabilities**
- ❖ **Appendix C: Illinois Assessment of Readiness and Illinois Science Assessment for Students with Visual Impairment, Including Blindness**
- ❖ **Assistive Technology Guidelines** on the **Illinois Support Site** at <https://il.mypearsonsupport.com>. Go to **Resources>Spring 2026 Accessibility Features and Accommodations (AF&A) Resources**
- ❖ **Infrastructure Trial Readiness Guide** on the **Illinois Support Site** at <https://il.mypearsonsupport.com>. Go to **Technology Setup>User Guides**

5.4 ISA Science Decision Tree

ISA Science Decision Tree



Repeat steps 1 through 3 from the [IAR and ISA Decision Tree](#). If the response to Decision 3 for science was "No," please proceed to the following instructions.

The Test Coordinator and student's IEP/504 teams should review the accommodated computer-based tests in **Section 3: Accommodations for Students with Disabilities** and choose the most appropriate accommodated testing assignment in the Illinois Administration Platform. The accommodated computer-based tests include an accommodated bundle, an accommodated sign language, and an accommodated AT/screen reader test form.

Online Accommodated – Bundle – Science: This version of the science test offers **both** built-in reading and writing support. For reading support, students can use **either** the Text-to-Speech or Proctor Read Aloud (Human Reader) features, **or** a combination of both, as decided by the Test Coordinator and IEP/504 teams. It is important that the chosen reading supports are clearly communicated to the Test

Proctor before test day. For writing support, the test form includes the **Tool Add-On - Speech-to-Text and Word Prediction**, providing writing assistance for students on constructed response items.

- **Tool Add-On – Speech to Text and Word Prediction:** This tool is included in this test form and does not need to be assigned separately.
- **Tool Add On – Online Calculator:** All computer-based science sections contain an online four-function calculator for student use. This add-on is irrelevant to the Illinois Science Assessment.

Online Accommodated - Sign Language: This science test form includes both item-level American Sign Language Videos and a Proctor Read Aloud (Human Signer) option that Test Proctors can access to assign the items for students. The Test Coordinator and IEP/504 teams should decide which reading support(s) the student will use and clearly communicate this plan to the Test Proctor.

- **Tool Add On – Online Calculator:** All computer-based science sections contain an online four-function calculator for student use. This add-on is irrelevant to the Illinois Science Assessment.
- **Tool Add-On – Speech to Text and Word Prediction:** Speech-to-Text and Word Prediction can be assigned as a tool add-on to the **Online Accommodated – Sign Language** test form in the Illinois Administration Platform for students whose IEP requires both reading and writing support on science state assessments and for whom the add-on is appropriate.

Online Accommodated - AT/Screen Reader: This test form is for blind or visually impaired students who regularly use a screen reader and refreshable braille device and can read braille and tactile graphics. This test form is compatible with various screen readers, Dragon NaturallySpeaking, and keyboard navigation. Students who are blind, visually impaired, or dependent on these technologies may be eligible. The **Assistive Technology Guidelines** available on the Illinois Support Site at <https://il.mypearsonsupport.com/> provide the TestNav allow list for technology compatible with TestNav. Click on **Resources > Spring 2026 Accessibility Features and Accommodations (AF&A) Resources**.

This test form can also be assigned to sighted students who use their own assistive technology for reading or writing support. However, the Test Coordinator and IEP/504 teams should review the **Online Accommodated – Bundle** test form when deciding if the **Online Accommodated – AT/Screen Reader** option is suitable. In certain cases, the **Online Accommodated – Bundle** may actually be a better fit for some sighted students.

- **Tool Add-On – Speech to Text and Word Prediction:** This tool is incompatible with this test form.
- **Tool Add-On – Online Calculator:** This tool is generally unsuitable for blind or visually impaired students who use local, specialized calculators for calculation. Sighted students using the **Online Accommodated – AT/Screen Reader** test form may be assigned the **Tool Add-On – Online Calculator** in non-calculator sections through the Illinois Administration Platform if their IEP requires one for state assessments and the add-on is suitable.

In cases where the student's AT is not compatible with TestNav, the **Online Accommodated – Bundle** may be appropriate for students who can successfully use Pearson's Text-to-Speech, Speech-to-Text, and Word Prediction on IAR ELA/L practice tests <https://il.mypearsonsupport.com/practice-items>.

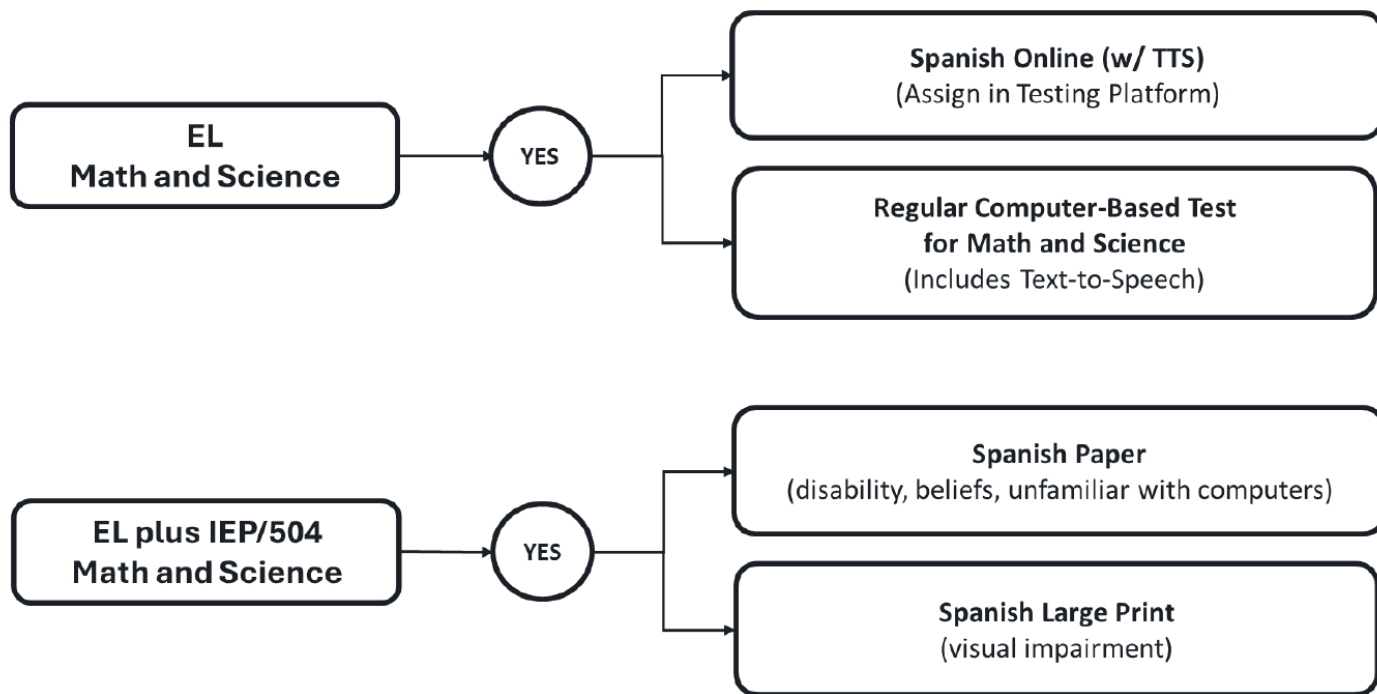
This test form is **NOT** appropriate for students who have deafness or hearing impairment with significant limitations or inability to decode text due to documented prolonged and early language deprivation, and who use **cochlear implants** or other hearing aids to access text-to-speech. These students should be assigned the **Online Accommodated -Bundle**.

Test Coordinators and IEP/504 teams should consult the following references to help determine whether this testing assignment is appropriate.

- ❖ **Section 3: Accommodations for Students with Disabilities**
- ❖ **Appendix C: Illinois Assessment of Readiness and Illinois Science Assessment for Students with Visual Impairment, Including Blindness**
- ❖ **Assistive Technology Guidelines** on the **Illinois Support Site** at <https://il.mypearsonsupport.com>. Go to **Resources>Spring 2026 Accessibility Features and Accommodations (AF&A) Resources**
- ❖ **Infrastructure Trial Readiness Guide** on the **Illinois Support Site** at <https://il.mypearsonsupport.com>. Go to **Technology Setup>User Guides**.

5.5 IAR Mathematics and ISA EL Decision Tree

IAR and ISA EL Decision Tree



NOTE: ELs with disabilities are eligible for accommodations allowed for students with disabilities. The IEP team or 504 Plan Coordinator should collaborate with school EL (i.e., language) staff and evaluation professionals to determine the English language development needs of an EL with an identified disability.

This chart provides a basic decision tree for assigning IAR mathematics and ISA tests for English learners. All EL students will be registered for grade-specific IAR and ISA assessments through the SIS system.

EL students with no IEP or 504 and ELA students with an IEP or 504 are automatically registered for grade-level IAR mathematics and ISA standard computer-based assessments through SIS. During registration, the Test Coordinator, EL and IEP/504 teams should review each student's testing plan to identify if additional supports beyond standard computer-based tools and features are needed.

- ❖ Refer to **Section 2: Overview of the Standard Computer-Based Assessment: Universal Tools, Accessibility Features, and Administrative Considerations for Computer-Based Testing**

DECISION 1: Would the student benefit from the student testing directions being read in the student's native language?

YES: Test Proctor Scripts with translated student directions are located on the Illinois Support Site at <https://il.mypearsonsupport.com/>. Click on **Resources>Test Proctor Scripts and Resources**.

DECISION 2: Does the EL student have an IEP or 504 plan?

NO: EL Students who do **NOT** have an IEP or 504 are automatically registered for grade-level IAR and ISA standard computer-based assessments through SIS. During registration, the Test Coordinator and EL teams should review each student's EL plan to identify whether the **Online Spanish (w/TTS)** (standard computer-based assessment in Spanish) test form is more appropriate for the student. Students should be tested in their language of instruction, when possible.

Online Spanish (w/TTS) – Mathematics

- **Tool Add On – Speech to Text and Word Prediction** is incompatible with this form.
- **Tool Add On – Online Calculator:** cannot be added to a test form for students who do not have an IEP or 504 plan.

Online Spanish (w/TTS) – Science

- **Tool Add On – Speech to Text and Word Prediction** cannot be added to a test form for students who do not have an IEP or 504 plan.
- **Tool Add On – Online Calculator:** All computer-based science sections contain an online four-function calculator for student use. This add-on is irrelevant to the Illinois Science Assessment.

- ❖ Refer to **Section 4: English Learners and English Learners with Disabilities**.

YES: Students with an IEP or 504 are automatically registered for grade-level IAR and ISA standard computer-based assessments through SIS. During registration, the Test Coordinator EL and IEP/504 teams should review each student's testing plan to identify if additional supports beyond standard computer-based tools and features are needed.

NOTE: ELs with disabilities are eligible for accommodations allowed for students with disabilities. The IEP team or 504 Plan Coordinator should collaborate with school EL (i.e., language) staff and evaluation professionals to determine the English language development needs of an EL with an identified disability.

- ❖ Refer to **Section 3: Accommodations for Students with Disabilities**.
- ❖ Refer to **Section 4: English Learners and English Learners with Disabilities**.

DECISION 3: Does the student’s testing plan require paper-based testing?

YES: Students who require paper-based testing for ELA/L will have two options: the paper-based test or the large print test in English. Students who require paper-based testing for mathematics and science will have four paper-based testing options: the paper-based test in English or Spanish or the large print test in English or Spanish.

The Test Coordinator and student’s EL and IEP/504 teams should review the IAR and ISA paper-based accommodations described in **Section 3: Accommodations for Students with Disabilities** and assign the most appropriate accommodated testing assignment and order the paper-based test in the Illinois Administration Platform.

NO: Students taking an ELA/L, mathematics, or science test who require support outside the standard computer-based test are eligible for accommodations allowed for students with disabilities. The IEP team or 504 Plan Coordinator should collaborate with school EL (i.e., language) staff and evaluation professionals to determine the English language development needs of an EL with an identified disability.

The **Online Spanish (w/TTS)** test form for mathematics and science can also be assigned to students with disabilities with the following IEP/504 supports:

Online Spanish (w/TTS) – Mathematics

- **Tool Add On – Speech to Text and Word Prediction** This tool is incompatible with this test form. A Human Scribe may need to be assigned to help the student record answers if **the Online Spanish (w/TTS)** test form is most appropriate for the student.
- **Tool Add On – Online Calculator:** the grade-specific calculator in non-calculator sections can be assigned as a tool add-on to the **Online Spanish (w/TTS)** test form in the Illinois Administration Platform for students whose IEP requires a calculator in non-calculator sections on state assessments and for whom the add-on is appropriate.

Online Spanish (w/TTS) – Science

- **Tool Add On – Speech to Text and Word Prediction** This tool is incompatible with this test form. A Human Scribe may need to be assigned to help the student record answers if **the Online Spanish (w/TTS)** test form is most appropriate for the student.
- **Tool Add On – Online Calculator:** All computer-based science sections contain an online four-function calculator for student use. This add-on is irrelevant to the Illinois Science Assessment